



**BMW 3 GRAN TURISMO: 1LTL551**

Vinnumber:	<b>WBA8Y510X0G430551</b>	Versionname:	<b>2.0 318D (100KW) GRAN TURISMO</b>
First Registrationdate:	<b>1/12/2015</b>	Fiscalpower:	
Expertise Mileage:	<b>93851</b>	Power Kw:	<b>100</b>
Bodytype:		Body color:	<b>Grey</b>
Gearbox:	<b>MAN 6 VIT</b>	Paint type:	<b>Metalic</b>
Transmission:	<b>Back</b>	Rims summer:	<b>Aluminium</b>
Fueltype:	<b>Diesel</b>	Oil level:	<b>OK</b>
Battery functioning:	<b>Yes</b>	Parking lot:	<b>4830</b>
Number of doors:	<b>5</b>		
Number of seats:	<b>5</b>		
Number head rests:	<b>5</b>		
Rims summer:	<b>Aluminium</b>		
Category:	<b>Passenger Car</b>		
Oil level:	<b>OK</b>		
Registration Certificate Car (BE):	<b>Yes</b>		

**Options**

Radio CD		Central consol F
GPS storage		Luggage cover
GPS storage	<b>HD</b>	Front parking sensors
Windows electric F		Rear parking sensors
Windows electric R		
Cruise Control		
Steering wheel multifunctional		
Seats F heated		
Radio multimedia		
Type of headlighting	<b>Headlighting Halogen</b>	
Type of GPS	<b>GPS big screen color</b>	
Type of Lining	<b>Lining artificial leather</b>	
Type of climate control	<b>Autom climate control</b>	
Head-up Display		

**Limited Technical Inspection**

Airco functioning	<b>OK</b>	Battery functioning	<b>Yes</b>
Tires wear profile	<b>OK</b>	Power steering	<b>Yes</b>
Idle position	<b>OK</b>	Sound engine	<b>OK</b>
Engine startingtime	<b>OK</b>	Clutch test	<b>OK</b>
Exhaust gass	<b>OK</b>	Wiper fluid level	<b>OK</b>
Handbrake	<b>OK</b>	Transmission	<b>OK</b>
		Lighting	<b>OK</b>
		Wiperblades	<b>OK</b>

**Degree of wear**

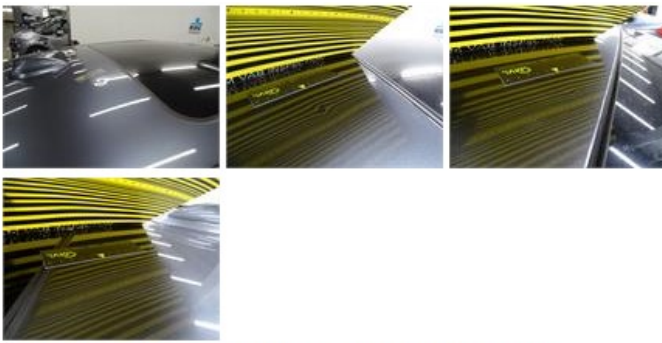
<b>225/50/19/95 H LightMetal</b>				
Winter tyres:	Fr.L.	<b>Pirelli: 3 mm</b>	Fr.R.	<b>Pirelli: 3 mm</b>
	Re.L.	<b>Bridgestone: 3 mm</b>	Re.R.	<b>Bridgestone: 3 mm</b>

**Assistance equipment**

Number of charging cables (normal)	<b>0</b>	Runflat	<b>Yes</b>
Number of charging cables (rapid charge)	<b>0</b>		

<b>Total cost ex VAT</b>	<b>882,08</b>
--------------------------	---------------

<b>Roof, Dent(s), PDR - Paintless dent repair</b>	<b>102,60</b>
---	---------------

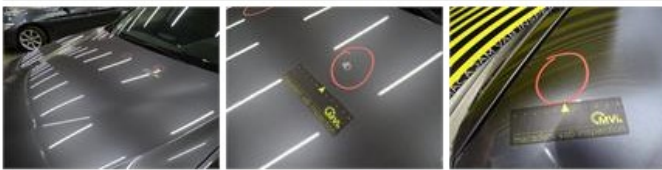


Alloy rim R R polished, Scratch(es), LI - Repair and paint (complete) 95,00



Roof, Dent(s), Acceptable 0,00  
No pictures to display

Bonnet, Chemical pollution, LI - Repair and paint (complete) 290,08



Bumper R, Scratch(es), LI - Repair and paint (complete) 211,80



Alloy rim F R polished, Scratch(es), LI - Repair and paint (complete) 95,00



Bumper F, Scratch(es), Acceptable 0,00  
No pictures to display

Door R R, Dent(s), Acceptable 0,00  
No pictures to display

Alloy rim R L polished, Scratch(es), Acceptable 0,00  
No pictures to display

Engine protective plate, Deformed / Strained, E - Replace 87,60

