



BMW 3 TOURING: TR9055

| | | | |
|------------------------------------|--------------------------|--------------|--|
| Vinnumber: | WBA8J11060K629977 | Versionname: | 2.0 320D (140KW) XDRIVE 4WD TOURING |
| First Registrationdate: | 21/03/2016 | Fiscalpower: | |
| Expertise Mileage: | 116856 | Power Kw: | 140 |
| Bodytype: | | Body color: | Blue |
| Gearbox: | Automatic | Paint type: | Metalic |
| Transmission: | Back | Rims summer: | Aluminium |
| Fueltype: | Diesel | Oil level: | OK |
| Maintenance: | OK | Parking lot: | 2826 |
| Battery functioning: | Yes | | |
| Number of doors: | 5 | | |
| Number of seats: | 5 | | |
| Number head rests: | 5 | | |
| Rims summer: | Aluminium | | |
| Category: | Passenger Car | | |
| Oil level: | OK | | |
| Registration Certificate Car (BE): | Yes | | |

Options

| | |
|--------------------------------|------------------------------|
| Radio CD | Central consol F |
| Windows electric F | Luggage cover |
| Windows electric R | Front parking sensors |
| Cruise Control | Rear parking sensors |
| Steering wheel multifunctional | |
| Type of headlighting | Headlighting LED |
| Type of GPS | GPS big screen color |
| Type of Lining | Lining fabrics |
| Type of climate control | Autom climate control |

Limited Technical Inspection

| | | | |
|---------------------|-----------|---------------------|------------|
| Airco functioning | OK | Battery functioning | Yes |
| Tires wear profile | OK | Power steering | Yes |
| Idle position | OK | Sound engine | OK |
| Engine startingtime | OK | Clutch test | OK |
| Exhaust gass | OK | Wiper fluid level | OK |
| Handbrake | OK | Transmission | OK |
| | | Lighting | OK |
| | | Wiperblades | OK |

Degree of wear

| | | | | |
|-----------------------------------|-------|--------------------------|-------|--------------------------|
| 205/60/16/92 MS LightMetal | | | | |
| Winter tyres: | Fr.L. | Continental: 4 mm | Fr.R. | Continental: 4 mm |
| | Re.L. | Continental: 5 mm | Re.R. | Continental: 5 mm |

Assistance equipment

| | | | |
|------------|------------|------------|------------|
| Repair kit | Yes | Compressor | Yes |
|------------|------------|------------|------------|

| | |
|-------------------|---------------|
| Total cost ex VAT | 890,00 |
|-------------------|---------------|

| | |
|---------------------------------|-------------|
| Bonnet, Scratch(es), Acceptable | 0,00 |
|---------------------------------|-------------|

No pictures to display

| | |
|---------------------------------------|---------------|
| Rear window, Scratch(es), E - Replace | 370,00 |
|---------------------------------------|---------------|



Roof, Scratch(es), Acceptable 0,00

No pictures to display

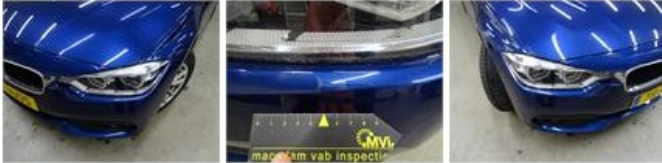
Alloy rim F L, Scratch(es), Acceptable 0,00

No pictures to display

Wing R L, Repaired, Acceptable 0,00



Bumper F, Dent(s) and scratch(es), LI - Repair and paint (complete) 211,80



Wing R R, Scratch(es), LI - Repair and paint (complete) 308,20



Bumper R, Scratch(es), Acceptable 0,00

No pictures to display