


**RENAULT Grand Scenic: 1JFC373**

Vinnumber:	<b>VF1JZNAB652171946</b>	Versionname:	<b>GRAND SCENIC Energy Limited 7pl.130PK</b>
First Registrationdate:	<b>1/12/2014</b>	Fiscalpower:	
Expertise Mileage:	<b>93518</b>	Power Kw:	<b>96</b>
Bodytype:		Body color:	<b>Black</b>
Gearbox:	<b>MAN 6 VIT</b>	Paint type:	<b>Metalic</b>
Transmission:	<b>Front</b>	Rims summer:	<b>Aluminium</b>
Fueltype:	<b>Diesel</b>	Oil level:	<b>OK</b>
Maintenance:	<b>NOT OK</b>	Parking lot:	<b>4329</b>
Battery functioning:	<b>Yes</b>		
Number of doors:	<b>5</b>		
Number of seats:	<b>7</b>		
Number head rests:	<b>7</b>		
Rims summer:	<b>Aluminium</b>		
Category:	<b>Passenger Car</b>		
Oil level:	<b>OK</b>		
Registration Certificate Car (BE):	<b>Yes</b>		

**Options**

Radio CD		Central consol F
GPS storage	<b>SD</b>	Luggage cover
GPS storage		Rear parking sensors
Windows electric F		
Windows electric R		
Cruise Control		
Steering wheel multifunctional		
Type of headlighting	<b>Headlighting Halogen</b>	
Type of GPS	<b>GPS big screen color</b>	
Type of Lining	<b>Lining fabrics</b>	
Type of climate control	<b>Autom climate control</b>	

**Limited Technical Inspection**

Airco functioning	<b>OK</b>	Battery functioning	<b>Yes</b>
Tires wear profile	<b>OK</b>	Power steering	<b>Yes</b>
Idle position	<b>OK</b>	Sound engine	<b>OK</b>
Engine startingtime	<b>OK</b>	Clutch test	<b>OK</b>
Exhaust gass	<b>OK</b>	Wiper fluid level	<b>OK</b>
Handbrake	<b>OK</b>	Transmission	<b>OK</b>
		Lighting	<b>OK</b>
		Wiperblades	<b>OK</b>

**Degree of wear**

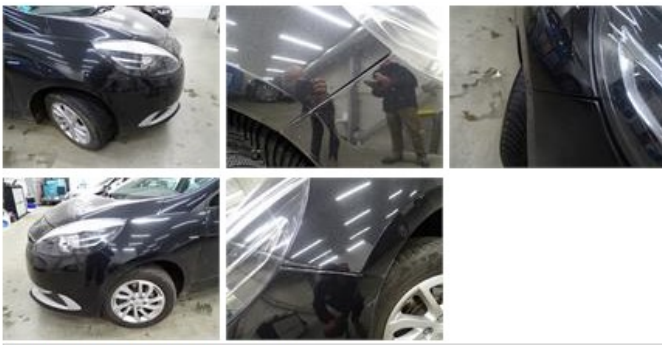
Winter tyres:	<b>205/60/16/92 MS LightMetal</b>			
	Fr.L.	<b>Michelin: 5 mm</b>	Fr.R.	<b>Michelin: 5 mm</b>
	Re.L.	<b>Michelin: 6 mm</b>	Re.R.	<b>Michelin: 6 mm</b>

**Assistance equipment**

Emergency spare wheel	<b>Yes</b>	Jack	<b>Yes</b>
-----------------------	------------	------	------------

Total cost ex VAT	<b>173,64</b>
-------------------	---------------

Bumper F, Deformed / Strained, Smart repair	<b>110,64</b>
---	---------------



Maintenance, Maintenance, Execute	0,00
-----------------------------------	------

*No pictures to display*

Wing R L, Dent(s), PDR - Paintless dent repair	63,00
--	-------



Bonnet, Dent(s), Acceptable	0,00
-----------------------------	------

*No pictures to display*

Wing F L, Scratch(es), Acceptable	0,00
-----------------------------------	------

*No pictures to display*

Door F R, Scratch(es), Acceptable	0,00
-----------------------------------	------

*No pictures to display*