



VOLKSWAGEN POLO: 1NFB156

| | | | |
|------------------------------------|--------------------------|--------------|-------------------------------------|
| Vinnumber: | WVWZZZ6RZGY188846 | Versionname: | 1.4 TDI 55KW COMFORTLINE BMT |
| First Registrationdate: | 9/02/2016 | Fiscalpower: | |
| Expertise Mileage: | 33364 | Power Kw: | 55 |
| Bodytype: | | Body color: | Black |
| Gearbox: | MAN 5 VIT | Paint type: | Metalic |
| Transmission: | Front | Rims summer: | Aluminium |
| Fueltype: | Diesel | Oil level: | OK |
| Battery functioning: | Yes | Parking lot: | 3206 |
| Number of doors: | 5 | | |
| Number of seats: | 5 | | |
| Number head rests: | 5 | | |
| Rims summer: | Aluminium | | |
| Category: | Passenger Car | | |
| Oil level: | OK | | |
| Registration Certificate Car (BE): | Yes | | |

Options

| | | |
|-------------------------|------------------------------|-----------------------|
| Radio CD | | Central consol F |
| GPS storage | | Luggage cover |
| GPS storage | SD | Front parking sensors |
| Windows electric F | | Rear parking sensors |
| Windows electric R | | |
| Cruise Control | | |
| Radio multimedia | | |
| Type of headlighting | Headlighting Halogen | |
| Type of GPS | GPS big screen color | |
| Type of Lining | Lining fabrics | |
| Type of climate control | Autom climate control | |

Limited Technical Inspection

| | | | |
|---------------------|-----------|---------------------|------------|
| Airco functioning | OK | Battery functioning | Yes |
| Tires wear profile | OK | Power steering | Yes |
| Idle position | OK | Sound engine | OK |
| Engine startingtime | OK | Clutch test | OK |
| Exhaust gass | OK | Wiper fluid level | OK |
| Handbrake | OK | Transmission | OK |
| | | Lighting | OK |
| | | Wiperblades | OK |

Degree of wear

| | | | | |
|----------------------------------|-------|--------------------------|-------|--------------------------|
| 185/60/15/84 T LightMetal | | | | |
| Winter tyres: | Fr.L. | Continental: 4 mm | Fr.R. | Continental: 4 mm |
| | Re.L. | Continental: 4 mm | Re.R. | Continental: 4 mm |

Assistance equipment

| | | | |
|--|------------|------|------------|
| Spare wheel | Yes | Jack | Yes |
| Number of charging cables (normal) | 0 | | |
| Number of charging cables (rapid charge) | 0 | | |

| | |
|---|---------------|
| Total cost ex VAT | 807,26 |
| Alloy rim R R polished, Scratch(es), LI - Repair and paint (complete) | 95,00 |



Bonnet, Chemical polution, LI - Repair and paint (complete)

232,06



Alloy rim F R polished, Scratch(es), LI - Repair and paint (complete)

95,00



Door F L, Scratch(es), Acceptable

0,00

No pictures to display

Bumper R, Scratch(es), Acceptable

0,00

No pictures to display

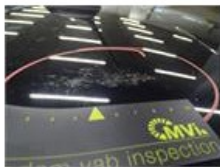
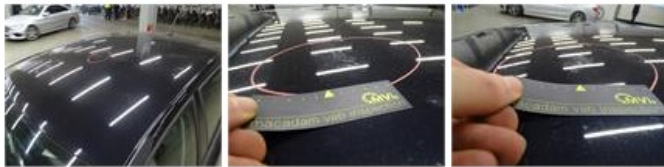
Wing R R, Dent(s), Acceptable

0,00

No pictures to display

Roof, Chemical polution, LI - Repair and paint (complete)

385,20



Tailgate, Dent(s), Acceptable

0,00

No pictures to display