



BMW X3: 1DMF987

Vinnumber:	WBAWY310500A58480	Versionname:	X3 xDrive20 163PK Aut.
First Registrationdate:	21/06/2012	Fiscalpower:	
Expertise Mileage:	179529	Power Kw:	120
Bodytype:		Body color:	Grey
Gearbox:	Automatic	Paint type:	Metalic
Transmission:	4 Weel	Rims summer:	Aluminium
Fueltype:	Diesel	Oil level:	OK
Battery functioning:	Yes	Parking lot:	4725
Number of doors:	5		
Number of seats:	5		
Number head rests:	5		
Rims summer:	Aluminium		
Category:	Passenger Car		
Oil level:	OK		

Options

Radio CD		Sun Roof electric	
GPS storage	HD	Panoramic roof	
GPS storage		Central consol F	
Windows electric F		Luggage cover	
Windows electric R		Front parking sensors	
Cruise Control		Rear parking sensors	
Steering wheel multifunctional			
Seats F heated			
Type of headlighting	Headlighting Halogen		
Type of GPS	GPS big screen color		
Type of Lining	Lining artificial leather		
Type of climate control	Autom climate control		

Limited Technical Inspection

Airco functioning	OK	Battery functioning	Yes
Tires wear profile	OK	Power steering	Yes
Idle position	OK	Sound engine	NOT OK
Engine startingtime	OK	Clutch test	OK
Exhaust gass	OK	Wiper fluid level	OK
Handbrake	OK	Transmission	OK
		Lighting	OK
		Wiperblades	OK

Degree of wear

225/60/17/99 H LightMetal				
Winter tyres:	Fr.L.	Continental: 5 mm	Fr.R.	Continental: 5 mm
	Re.L.	Continental: 5 mm	Re.R.	Continental: 5 mm

Assistance equipment

Repair kit	Yes	Compressor	Yes
Total cost ex VAT			1801,24
Wing F R, Scratch(es), LI - Repair and paint (complete)			220,18



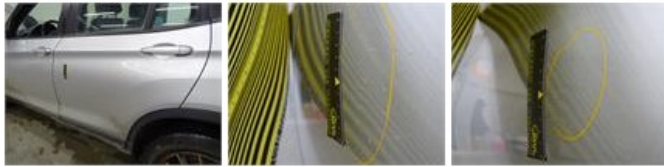
Rocker panel inner R R, Scratch(es), Acceptable 0,00

No pictures to display

Alloy rim R R, Scratch(es), Acceptable 0,00

No pictures to display

Door R L, Dent(s), PDR - Paintless dent repair 82,80



Door F L, Dent(s), PDR - Paintless dent repair 63,00



Alloy rim R R, Scratch(es), Acceptable 0,00

No pictures to display

Rearview mirror housing R, Scratch(es), LI - Repair and paint (complete) 115,56



Windscreen, Stone chip(s), E - Replace 0,00



Seat cover F L, Worn, Acceptable 0,00



Wing R L, Scratch(es), Acceptable 0,00

No pictures to display

Alloy rim F L, Scratch(es), LI - Repair and paint (complete) 95,00



Bumper R, Scratch(es), LI - Repair and paint (complete) 211,80



Bumper moulding R, Scratch(es), E - Replace 14,40



Ignition key, Missing, E - Replace 150,00



Bumper F, Scratch(es), LI - Repair and paint (complete) 211,80



Door R R, Dent(s) and scratch(es), LI - Repair and paint (complete) 318,35



Door panel F R, Scratch(es), Acceptable 0,00

No pictures to display

Door F R, Dent(s) and scratch(es), LI - Repair and paint (complete) 318,35

