



BMW 5: 1JGB998

Vinnumber:	WBA5L11080D968743	Versionname:	5 TOURING 518dA 136PK Aut.
First Registrationdate:	9/12/2014	Fiscalpower:	
Expertise Mileage:	135139	Power Kw:	100
Bodytype:		Body color:	Brown
Gearbox:	Automatic	Paint type:	Metalic
Transmission:	Back	Rims summer:	Aluminium
Fueltype:	Diesel	Oil level:	OK
Maintenance:	NOT OK	Parking lot:	4829
Battery functioning:	Yes		
Number of doors:	5		
Number of seats:	5		
Number head rests:	5		
Rims summer:	Aluminium		
Category:	Passenger Car		
Oil level:	OK		
Registration Certificate Car (BE):	Yes		

Options

Radio CD	Central consol F
Windows electric F	Luggage cover
Windows electric R	Front parking sensors
Cruise Control	Rear parking sensors
Steering wheel multifunctional	
Seats F heated	
Type of headlighting	Headlighting Xenon
Type of GPS	GPS big screen color
Type of Lining	Lining artificial leather
Type of climate control	Autom climate control

Limited Technical Inspection

Airco functioning	OK	Battery functioning	Yes
Tires wear profile	OK	Power steering	Yes
Idle position	OK	Sound engine	OK
Engine startingtime	OK	Clutch test	OK
Exhaust gass	OK	Wiper fluid level	OK
Handbrake	OK	Transmission	OK
		Lighting	OK
		Wiperblades	OK

Degree of wear

225/55/17/92 MS LightMetal				
Winter tyres:	Fr.L.	Uniroyal: 4 mm	Fr.R.	Uniroyal: 4 mm
	Re.L.	Uniroyal: 5 mm	Re.R.	Uniroyal: 5 mm

Assistance equipment

Repair kit	Yes	Compressor	Yes
Total cost ex VAT			1996,40
Door frame F L, Bad repair, Le - Replace and paint			0,00



Bumper R, Dent(s) and scratch(es), Le - Replace and paint

766,80



Alloy rim R L, Scratch(es), LI - Repair and paint (complete)

95,00



Maintenance, Maintenance, Diagnosis

0,00



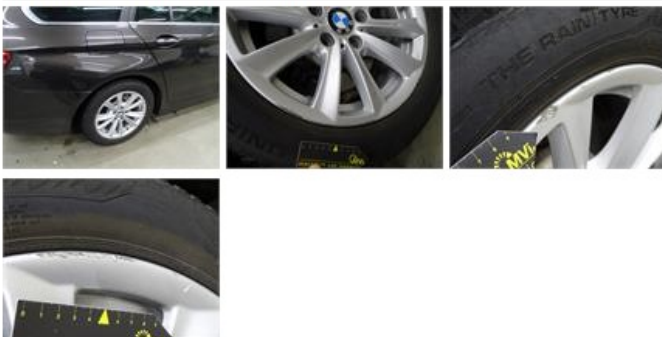
Door F R, Scratch(es), Acceptable

0,00

No pictures to display

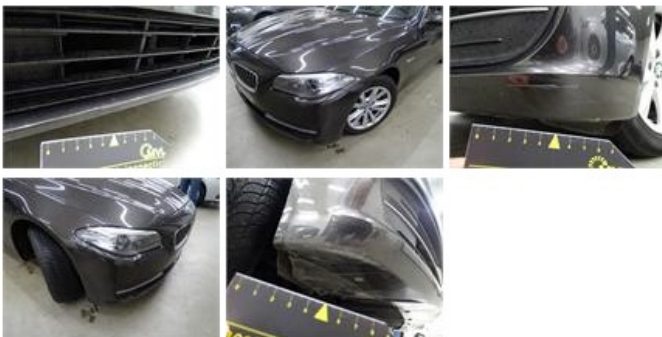
Alloy rim R R, Scratch(es), E - Replace

277,44



Bumper F, Dent(s) and scratch(es), LI - Repair and paint (complete)

254,16



Sill outer L, Scratch(es), Acceptable

0,00

No pictures to display

Seat cover F L, Stain, Cleaning

25,00



Alloy rim F R, Scratch(es), LI - Repair and paint (complete)

95,00



Door F L, Dent(s), PDR - Paintless dent repair

63,00



Rear window, Scratch(es), E - Replace

420,00

