



**JAGUAR XE: SR8963**

Vinnumber:	<b>SAJAB4BNXGA938494</b>	Versionname:	<b>2.0D 180HP AUTO PORTFOLIO</b>
First Registrationdate:	<b>23/02/2016</b>	Fiscalpower:	
Expertise Mileage:	<b>99885</b>	Power Kw:	<b>132</b>
Bodytype:		Body color:	<b>Blue</b>
Gearbox:	<b>Automatic</b>	Paint type:	<b>Metalic</b>
Transmission:	<b>Front</b>	Rims summer:	<b>Aluminium</b>
Fueltype:	<b>Diesel</b>	Oil level:	<b>OK</b>
Maintenance:	<b>OK</b>	Parking lot:	<b>3503</b>
Battery functioning:	<b>Yes</b>		
Number of doors:	<b>4</b>		
Number of seats:	<b>5</b>		
Number head rests:	<b>5</b>		
Rims summer:	<b>Aluminium</b>		
Category:	<b>Passenger Car</b>		
Oil level:	<b>OK</b>		
Registration Certificate Car (BE):	<b>Yes</b>		

**Options**

Windows electric F	Central consol F
Windows electric R	Front parking sensors
Cruise Control	Rear parking sensors
Steering wheel multifunctional	
Radio multimedia	
Type of headlighting	<b>Headlighting Xenon</b>
Type of GPS	<b>GPS big screen color</b>
Type of Lining	<b>Lining leather</b>
Type of climate control	<b>Autom climate control</b>

**Limited Technical Inspection**

Airco functioning	<b>OK</b>	Battery functioning	<b>Yes</b>
Tires wear profile	<b>OK</b>	Power steering	<b>Yes</b>
Idle position	<b>OK</b>	Sound engine	<b>OK</b>
Engine startingtime	<b>OK</b>	Clutch test	<b>OK</b>
Exhaust gass	<b>OK</b>	Wiper fluid level	<b>OK</b>
Handbrake	<b>OK</b>	Transmission	<b>OK</b>
		Lighting	<b>OK</b>
		Wiperblades	<b>OK</b>

**Degree of wear**

	<b>225/45/18/92 MS LightMetal</b>			
Winter tyres:	Fr.L.	<b>Michelin: 4 mm</b>	Fr.R.	<b>Michelin: 4 mm</b>
	Re.L.	<b>Michelin: 5 mm</b>	Re.R.	<b>Michelin: 5 mm</b>

**Assistance equipment**

Repair kit	<b>Yes</b>	Compressor	<b>Yes</b>
------------	------------	------------	------------

Total cost ex VAT	<b>2987,91</b>
Door F R, Dent(s) and scratch(es), LI - Repair and paint (complete)	<b>382,02</b>





Alloy rim R L, Scratch(es), LI - Repair and paint (complete) 95,00



Alloy rim R R, Scratch(es), LI - Repair and paint (complete) 95,00



Door R R, Dent(s) and scratch(es), LI - Repair and paint (complete) 382,02



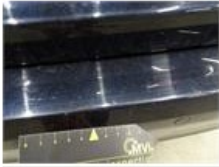
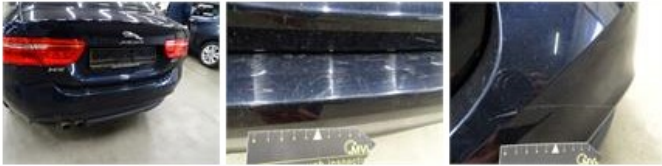
Alloy rim F L, Scratch(es), LI - Repair and paint (complete) 95,00



Tailgate, Scratch(es), LI - Repair and paint (complete) 362,02



Bumper R, Scratch(es), LI - Repair and paint (complete) 254,16



Wing R L, Scratch(es), Acceptable 0,00

No pictures to display

Door R L, Dent(s), LI - Repair and paint (complete) 382,02



Door F L, Scratch(es), LI - Repair and paint (complete) 382,02



Bonnet, Scratch(es), LI - Repair and paint (complete) 348,09



Rearview mirror housing L, Scratch(es), LI - Repair and paint (complete)	115,56
--	--------



Wing R R, Dent(s), Acceptable	0,00
-------------------------------	------

*No pictures to display*

Alloy rim F R, Scratch(es), LI - Repair and paint (complete)	95,00
--	-------

