



MERCEDES B: 1JRH829

Vinnumber:	WDD2462121J305906	Versionname:	1.5 B 180 CDI URBAN
First Registrationdate:	6/02/2015	Fiscalpower:	
Expertise Mileage:	95148	Power Kw:	80
Bodytype:		Body color:	Grey
Gearbox:	Automatic	Paint type:	Metalic
Transmission:	Back	Rims summer:	Aluminium
Fueltype:	Diesel	Oil level:	OK
Battery functioning:	Yes	Parking lot:	3117
Number of doors:	5		
Number of seats:	5		
Number head rests:	5		
Rims summer:	Aluminium		
Category:	Passenger Car		
Oil level:	OK		
Registration Certificate Car (BE):	Yes		

Options

Radio CD		Central consol F	
GPS storage		Luggage cover	
GPS storage	SD	Front parking sensors	
Windows electric F		Rear parking sensors	
Windows electric R		Type of Tow bar	Tow bar removable
Cruise Control			
Steering wheel multifunctional			
Seats F heated			
Radio multimedia			
Type of headlighting	Headlighting Halogen		
Type of GPS	GPS big screen color		
Type of Lining	Lining semi-leather		
Type of climate control	Manual climate control		

Limited Technical Inspection

Airco functioning	OK	Battery functioning	Yes
Tires wear profile	OK	Power steering	Yes
Idle position	OK	Sound engine	OK
Engine startingtime	OK	Clutch test	NOT OK
Exhaust gass	OK	Wiper fluid level	OK
Handbrake	OK	Transmission	OK
		Lighting	OK
		Wiperblades	OK

Degree of wear

222/45/17/91 H LightMetal				
Winter tyres:	Fr.L.	Dunlop: 4 mm	Fr.R.	Dunlop: 4 mm
	Re.L.	Dunlop: 4 mm	Re.R.	Dunlop: 4 mm

Assistance equipment

Repair kit	No	Compressor	No
Number of charging cables (normal)	0		
Number of charging cables (rapid charge)	0		

Total cost ex VAT	1311,97
Tyre repair kit, Missing, E - Replace	210,53



Alloy rim R L, Scratch(es), LI - Repair and paint (complete)	95,00
--	-------



Alloy rim F R, Scratch(es), LI - Repair and paint (complete)	95,00
--	-------



Rocker panel inner R R, Dent(s), LI - Repair and paint (complete)	115,56
---	--------



Compressor, Missing, E - Replace	0,00
----------------------------------	------



Door F L, Scratch(es), Acceptable	0,00
-----------------------------------	------

No pictures to display

Bumper F, Scratch(es), LI - Repair and paint (complete)	211,80
---	--------



Bumper moulding F, Crack, E - Replace	112,08
---------------------------------------	--------



Alloy rim R R, Scratch(es), LI - Repair and paint (complete)	95,00
--	-------



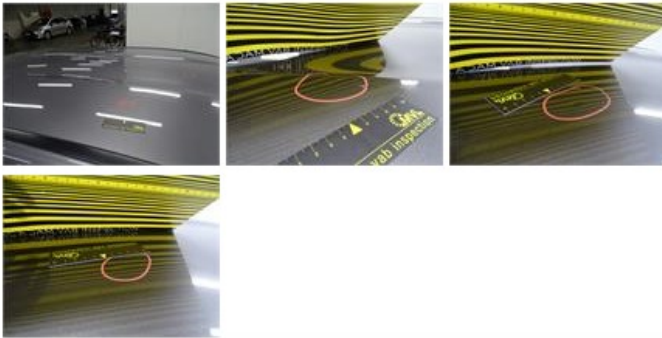
Alloy rim F L, Scratch(es), LI - Repair and paint (complete)	95,00
--	-------



Door R R, Dent(s), Acceptable 0,00

No pictures to display

Roof, Hail damage, PDR - Hail 150,00



Bonnet, Dent(s), Acceptable 0,00

No pictures to display

Wing R R, Dent(s), Acceptable 0,00

No pictures to display

Tyre F R, Tear, E - Replace 132,00

