



MINI : 1PCU619			
Vinnumber:	WMWXN110003851634	Versionname:	1.5 ONE D
First Registrationdate:	7/06/2016	Fiscalpower:	
Expertise Mileage:	118089	Power Kw:	70
Bodytype:		Body color:	Black
Gearbox:	MAN 6 VIT	Paint type:	Metallic
Transmission:	Front	Rims summer:	Aluminium
Fueltype:	Diesel	Oil level:	OK
Battery functioning:	Yes	Parking lot:	3411
Number of doors:	3		
Number of seats:	4		
Number head rests:	4		
Rims summer:	Aluminium		
Category:	Passenger Car		
Oil level:	OK		
Registration Certificate Car (BE):	Yes		

Options			
Windows electric F		Luggage cover	
Radio multimedia		Type of Tow bar	No Tow bar
Type of headlighting	Headlighting Halogen		
Type of GPS	GPS big screen color		
Type of Lining	Lining fabrics		
Type of climate control	Manual climate control		

Limited Technical Inspection			
Airco functioning	OK	Battery functioning	Yes
Tires wear profile	OK	Power steering	Yes
Idle position	OK	Sound engine	OK
Engine startingtime	OK	Clutch test	OK
Exhaust gass	OK	Wiper fluid level	OK
Handbrake	OK	Transmission	OK
		Lighting	OK
		Wiperblades	OK

Degree of wear				
	175/65/15/84 Y LightMetal			
Winter tyres:	Fr.L.	Michelin: 3 mm	Fr.R.	Michelin: 3 mm
	Re.L.	Michelin: 3 mm	Re.R.	Michelin: 3 mm

Assistance equipment			
Repair kit	Yes	Compressor	Yes
Number of charging cables (normal)	0		
Number of charging cables (rapid charge)	0		

Total cost ex VAT	786,60
Bonnet, Stone chip(s), Acceptable	0,00
<i>No pictures to display</i>	
Rear window, Not original part, Acceptable	0,00
<i>No pictures to display</i>	
Wing R R, Dent(s), Acceptable	0,00
<i>No pictures to display</i>	
Wheel arch cover R L, Scratch(es), E - Replace	108,40



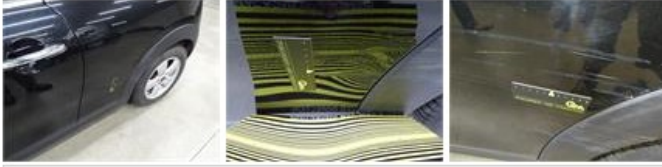
Alloy Rims (all), Not original part, Acceptable 0,00

No pictures to display

Windscreen, Stone chip(s), Acceptable 0,00

No pictures to display

Wing R L, Dent(s) and scratch(es), LI - Repair and paint (complete) 308,20



Rear window, Scratch(es), E - Replace 370,00

