



**VOLVO V40: 1NHF431**

|                                    |                          |              |                       |
|------------------------------------|--------------------------|--------------|-----------------------|
| Vinnumber:                         | <b>VV1MV74L1G2333805</b> | Versionname: | <b>2.0 D2 KINETIC</b> |
| First Registrationdate:            | <b>24/02/2016</b>        | Fiscalpower: |                       |
| Expertise Mileage:                 | <b>64508</b>             | Power Kw:    | <b>88</b>             |
| Bodytype:                          |                          | Body color:  | <b>Grey</b>           |
| Gearbox:                           | <b>MAN 6 VIT</b>         | Paint type:  | <b>Metalic</b>        |
| Transmission:                      | <b>Front</b>             | Rims summer: | <b>Aluminium</b>      |
| Fueltype:                          | <b>Diesel</b>            | Oil level:   | <b>OK</b>             |
| Battery functioning:               | <b>Yes</b>               | Parking lot: | <b>3407</b>           |
| Number of doors:                   | <b>5</b>                 |              |                       |
| Number of seats:                   | <b>5</b>                 |              |                       |
| Number head rests:                 | <b>5</b>                 |              |                       |
| Rims summer:                       | <b>Aluminium</b>         |              |                       |
| Category:                          | <b>Passenger Car</b>     |              |                       |
| Oil level:                         | <b>OK</b>                |              |                       |
| Registration Certificate Car (BE): | <b>Yes</b>               |              |                       |

**Options**

|                                |                               |
|--------------------------------|-------------------------------|
| Radio CD                       | Central consol F              |
| Windows electric F             | Luggage cover                 |
| Windows electric R             | Rear parking sensors          |
| Cruise Control                 | Type of Tow bar               |
| Steering wheel multifunctional | <b>No Tow bar</b>             |
| Radio multimedia               |                               |
| Type of headlighting           | <b>Headlighting Halogen</b>   |
| Type of GPS                    | <b>GPS big screen color</b>   |
| Type of Lining                 | <b>Lining fabrics</b>         |
| Type of climate control        | <b>Manual climate control</b> |

**Limited Technical Inspection**

|                     |           |                     |            |
|---------------------|-----------|---------------------|------------|
| Airco functioning   | <b>OK</b> | Battery functioning | <b>Yes</b> |
| Tires wear profile  | <b>OK</b> | Power steering      | <b>Yes</b> |
| Idle position       | <b>OK</b> | Sound engine        | <b>OK</b>  |
| Engine startingtime | <b>OK</b> | Clutch test         | <b>OK</b>  |
| Exhaust gass        | <b>OK</b> | Wiper fluid level   | <b>OK</b>  |
| Handbrake           | <b>OK</b> | Transmission        | <b>OK</b>  |
|                     |           | Lighting            | <b>OK</b>  |
|                     |           | Wiperblades         | <b>OK</b>  |

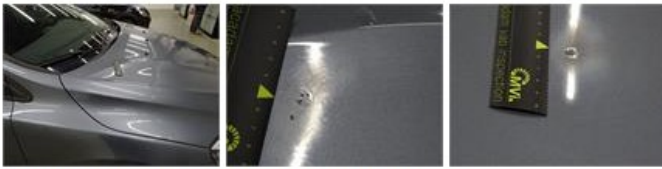
**Degree of wear**

|                                  |       |       |                |
|----------------------------------|-------|-------|----------------|
| <b>205/55/16/94 H LightMetal</b> |       |       |                |
| Winter tyres:                    | Fr.L. | Fr.R. | Michelin: 4 mm |
|                                  | Re.L. | Re.R. | Michelin: 4 mm |

**Assistance equipment**

|  |            |            |            |
|--|------------|------------|------------|
| Repair kit                               | <b>Yes</b> | Compressor | <b>Yes</b> |
| Number of charging cables (normal)       | <b>0</b>   |            |            |
| Number of charging cables (rapid charge) | <b>0</b>   |            |            |

|   |        |
|---|--------|
| Total cost ex VAT   | 866,58 |
| Bonnet, Chemical polution, LI - Repair and paint (complete) | 290,08 |



|  |       |
|--|-------|
| Alloy rim F R, Scratch(es), LI - Repair and paint (complete) | 95,00 |
|--|-------|



|  |      |
|--|------|
| Alloy rim R R, Scratch(es), Acceptable | 0,00 |
|--|------|

*No pictures to display*

|  |      |
|--|------|
| Window F L door, Scratch(es), Acceptable | 0,00 |
|--|------|

*No pictures to display*

|   |        |
|---|--------|
| Roof, Chemical polution, LI - Repair and paint (complete) | 481,50 |
|---|--------|

