



VOLVO V40: 1JVN817

| | | | |
|------------------------------------|--------------------------|--------------|---------------------------------|
| Vinnumber: | VV1MV8461F2235375 | Versionname: | 1.6 D2 MOMENTUM R-DESIGN |
| First Registrationdate: | 6/03/2015 | Fiscalpower: | |
| Expertise Mileage: | 123282 | Power Kw: | 84 |
| Bodytype: | Hatchback | Body color: | Black |
| Gearbox: | MAN 6 VIT | Paint type: | Metalic |
| Transmission: | Front | Rims summer: | Aluminium |
| Fueltype: | Diesel | Oil level: | OK |
| Maintenance: | OVER 1619 KM | Parking lot: | 4127 |
| Maintenance: | OK | | |
| Battery functioning: | Yes | | |
| Number of doors: | 5 | | |
| Number of seats: | 5 | | |
| Number head rests: | 5 | | |
| Rims summer: | Aluminium | | |
| Category: | Passenger Car | | |
| Oil level: | OK | | |
| Registration Certificate Car (BE): | Yes | | |

Options

| | | | |
|--------------------------------|------------------------------|----------------------|-------------------|
| GPS storage | | Central consol F | |
| GPS storage | HD | Luggage cover | |
| Windows electric F | | Rear parking sensors | |
| Windows electric R | | Type of Tow bar | No Tow bar |
| Cruise Control | | | |
| Steering wheel multifunctional | | | |
| Seats F heated | | | |
| Type of headlighting | Headlighting Halogen | | |
| Type of GPS | GPS big screen color | | |
| Type of Lining | Lining leather | | |
| Type of climate control | Autom climate control | | |

Limited Technical Inspection

| | | | |
|---------------------|-----------|---------------------|------------|
| Airco functioning | OK | Battery functioning | Yes |
| Tires wear profile | OK | Power steering | Yes |
| Idle position | OK | Sound engine | OK |
| Engine startingtime | OK | Clutch test | OK |
| Exhaust gass | OK | Wiper fluid level | OK |
| Handbrake | OK | Transmission | OK |
| | | Lighting | OK |
| | | Wiperblades | OK |

Degree of wear

| | | | | |
|---------------|----------------------------------|----------------------|-------|----------------------|
| | 205/50/17/93 T LightMetal | | | |
| Winter tyres: | Fr.L. | Pirelli: 4 mm | Fr.R. | Pirelli: 4 mm |
| | Re.L. | Pirelli: 4 mm | Re.R. | Pirelli: 4 mm |

Assistance equipment

| | | | |
|------------|------------|------------|------------|
| Repair kit | Yes | Compressor | Yes |
|------------|------------|------------|------------|

| | |
|-------------------|---------------|
| Total cost ex VAT | 688,60 |
|-------------------|---------------|

| | |
|--------------------------------|-------------|
| Spoiler R, Dent(s), Acceptable | 0,00 |
|--------------------------------|-------------|

No pictures to display

| | |
|---|-------------|
| Rocker panel inner F L, Scratch(es), Acceptable | 0,00 |
|---|-------------|

No pictures to display

| | |
|---|---------------|
| Bumper F, Scratch(es), LI - Repair and paint (complete) | 211,80 |
|---|---------------|



Alloy rim F L polished, Scratch(es), LI - Repair and paint (complete)

95,00



Door R L, Scratch(es), Acceptable

0,00

No pictures to display

Alloy rim R L polished, Scratch(es), Acceptable

0,00

No pictures to display

Door F L, Scratch(es), Acceptable

0,00

No pictures to display

Protection plate M, Hole, Acceptable

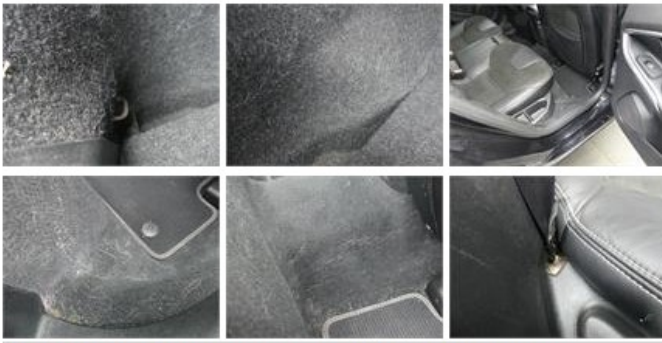
0,00

No pictures to display

Interior, Dirty, Cleaning

75,00





Alloy rim F R polished, Scratch(es), LI - Repair and paint (complete) 95,00



Alloy rim R R polished, Scratch(es), Acceptable 0,00

No pictures to display

Bumper R, Scratch(es), LI - Repair and paint (complete) 211,80



Wing R L, Scratch(es), Acceptable 0,00

No pictures to display