



BMW X4: 1NGE335

Vinnumber:	WBAXX110700F80104	Versionname:	2.0 XDRIVE20D (140KW) 4WD
First Registrationdate:	17/02/2016	Fiscalpower:	
Expertise Mileage:	74345	Power Kw:	140
Bodytype:		Body color:	Black
Gearbox:	Automatic	Paint type:	Metalic
Transmission:	4 Weel	Rims summer:	Aluminium
Fueltype:	Diesel	Oil level:	OK
Battery functioning:	Yes	Parking lot:	1209
Number of doors:	5		
Number of seats:	5		
Number head rests:	5		
Rims summer:	Aluminium		
Category:	Passenger Car		
Oil level:	OK		
Registration Certificate Car (BE):	Yes		

Options

Radio CD		Sun Roof electric	
GPS storage		Central consol F	
GPS storage	HD	Luggage cover	
Windows electric F		Front parking sensors	
Windows electric R		Rear parking sensors	
Cruise Control			
Steering wheel multifunctional			
Seats F heated			
Type of headlighting	Headlighting Xenon		
Type of GPS	GPS big screen color		
Type of Lining	Lining leather		
Type of climate control	Autom climate control		

Limited Technical Inspection

Airco functioning	OK	Battery functioning	Yes
Tires wear profile	OK	Power steering	Yes
Idle position	OK	Sound engine	OK
Engine startingtime	OK	Clutch test	OK
Exhaust gass	OK	Wiper fluid level	OK
Handbrake	OK	Transmission	OK
		Lighting	OK
		Wiperblades	OK

Degree of wear

275/40/19/101 Y LightMetal				
Summer tyres:	Fr.L.	Michelin: 5 mm	Fr.R.	Michelin: 5 mm
	Re.L.	Michelin: 5 mm	Re.R.	Michelin: 5 mm

Assistance equipment

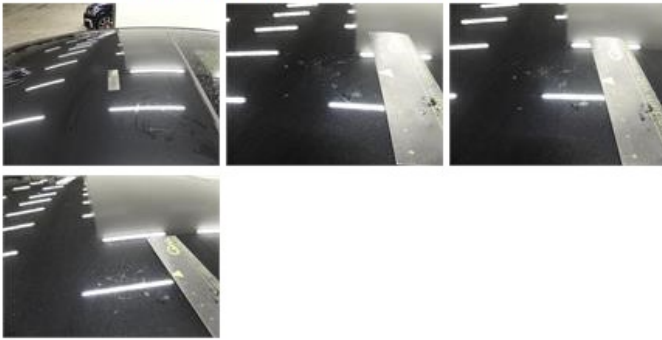
Runflat	Yes
---------	------------

Total cost ex VAT	957,80
-------------------	---------------

Seat cover F L, Tear, Acceptable	0,00
----------------------------------	-------------



Roof, Chemical polution, LI - Repair and paint (complete) 577,80



Alloy rim F R, Scratch(es), LI - Repair and paint (complete) 95,00



Alloy rim R L, Scratch(es), LI - Repair and paint (complete) 95,00



Bumper R, Scratch(es), Acceptable 0,00

No pictures to display

Alloy rim F L, Scratch(es), LI - Repair and paint (complete) 95,00



Alloy rim R R, Scratch(es), LI - Repair and paint (complete) 95,00



Rocker panel inner R R, Scratch(es), Acceptable 0,00

No pictures to display