



**MERCEDES A: 1PSZ601**

Vinnumber:	<b>WDD1760121J517060</b>	Versionname:	<b>A 180 d BlueEFFICIENCY Edition</b>
First Registrationdate:	<b>9/09/2016</b>	Fiscalpower:	
Expertise Mileage:	<b>44246</b>	Power Kw:	<b>80</b>
Bodytype:		Body color:	<b>Grey</b>
Gearbox:	<b>MAN 6 VIT</b>	Paint type:	<b>Metalic</b>
Transmission:	<b>Front</b>	Rims summer:	<b>Steel</b>
Fueltype:	<b>Diesel</b>	Oil level:	<b>OK</b>
Maintenance:	<b>NOT OK</b>	Parking lot:	<b>2603</b>
Battery functioning:	<b>Yes</b>		
Number of doors:	<b>5</b>		
Number of seats:	<b>5</b>		
Number head rests:	<b>5</b>		
Rims summer:	<b>Steel</b>		
Category:	<b>Passenger Car</b>		
Oil level:	<b>OK</b>		
Registration Certificate Car (BE):	<b>Yes</b>		

**Options**

Radio CD	Central consol F
Windows electric F	Luggage cover
Windows electric R	
Steering wheel multifunctional	
Type of headlighting	<b>Headlighting Halogen</b>
Type of GPS	<b>GPS big screen color</b>
Type of Lining	<b>Lining fabrics</b>
Type of climate control	<b>Manual climate control</b>

**Limited Technical Inspection**

Airco functioning	<b>OK</b>	Battery functioning	<b>Yes</b>
Tires wear profile	<b>OK</b>	Power steering	<b>Yes</b>
Idle position	<b>OK</b>	Sound engine	<b>OK</b>
Engine startingtime	<b>OK</b>	Clutch test	<b>OK</b>
Exhaust gass	<b>OK</b>	Wiper fluid level	<b>OK</b>
Handbrake	<b>OK</b>	Transmission	<b>OK</b>
		Lighting	<b>OK</b>
		Wiperblades	<b>OK</b>

**Degree of wear**

	<b>195/65/15/92 MS Steel</b>			
Winter tyres:	Fr.L.	<b>Michelin: 5 mm</b>	Fr.R.	<b>Michelin: 5 mm</b>
	Re.L.	<b>Michelin: 6 mm</b>	Re.R.	<b>Michelin: 6 mm</b>

**Assistance equipment**

Repair kit	<b>Yes</b>	Compressor	<b>Yes</b>
------------	------------	------------	------------

Total cost ex VAT 2115,18

Wheel cover F R, Scratch(es), E - Replace 30,00



Bumper F, Crack, Le - Replace and paint



Roof, Chemical polution, 67 - Polish 0,00



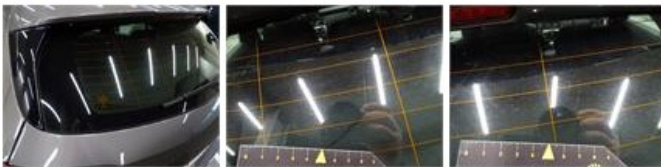
Wheel cover R L, Scratch(es), E - Replace 30,00



Wheel cover R R, Scratch(es), E - Replace 30,00



Rear window, Scratch(es), E - Replace 370,00



Wing F L, Dent(s), LI - Repair and paint (complete) 220,18



Maintenance, Maintenance, Execute 0,00

No pictures to display

Wheel cover F L, Scratch(es), E - Replace 30,00



Bumper R, Scratch(es), LI - Repair and paint (complete) 211,80



Wing R L, Scratch(es), LI - Repair and paint (complete) 308,20





Ignition key, Missing, E - Replace

150,00

*No pictures to display*