



**CITROEN JUMPER: 1CGG251**

Vinnumber:	<b>VF7YC2MFC12H31686</b>	Versionname:	
First Registrationdate:	<b>19/09/2018</b>	Fiscalpower:	
Expertise Mileage:	<b>25694</b>	Power Kw:	<b>96</b>
Bodytype:		Body color:	<b>White</b>
Gearbox:	<b>MAN 6 VIT</b>	Paint type:	<b>Opaque</b>
Transmission:	<b>Front</b>	Rims summer:	<b>Steel</b>
Fueltype:	<b>Diesel</b>	Oil level:	<b>OK</b>
Battery functioning:	<b>Yes</b>	Parking lot:	<b>LCV31</b>
Number of doors:	<b>5</b>		
Number of seats:	<b>3</b>		
Number head rests:	<b>3</b>		
Rims summer:	<b>Steel</b>		
Category:	<b>Passenger Car</b>		
Oil level:	<b>OK</b>		
Registration Certificate Car (BE):	<b>Yes</b>		

**Options**

Radio CD		Type of Tow bar	<b>No Tow bar</b>
Windows electric F			
Cruise Control			
Steering wheel multifunctional			
Radio multimedia			
Type of headlighting	<b>Headlighting Halogen</b>		
Type of GPS	<b>GPS big screen color</b>		
Type of Lining	<b>Lining fabrics</b>		
Type of climate control	<b>Autom climate control</b>		

**Limited Technical Inspection**

Airco functioning	<b>OK</b>	Battery functioning	<b>Yes</b>
Tires wear profile	<b>OK</b>	Power steering	<b>Yes</b>
Idle position	<b>OK</b>	Sound engine	<b>OK</b>
Engine startingtime	<b>OK</b>	Clutch test	<b>OK</b>
Exhaust gass	<b>OK</b>	Wiper fluid level	<b>OK</b>
Handbrake	<b>OK</b>	Transmission	<b>OK</b>
		Lighting	<b>OK</b>
		Wiperblades	<b>OK</b>

**Degree of wear**

<b>215/70/15/107 S Steel</b>				
Summer tyres:	Fr.L.	<b>Other: 4 mm</b>	Fr.R.	<b>Other: 4 mm</b>
	Re.L.	<b>Other: 4 mm</b>	Re.R.	<b>Other: 4 mm</b>

**Assistance equipment**

Emergency spare wheel	<b>Yes</b>	Jack	<b>Yes</b>
Number of charging cables (normal)	<b>0</b>		
Number of charging cables (rapid charge)	<b>0</b>		

Total cost ex VAT 231,15

Interior, Dirty, Acceptable 0,00

*No pictures to display*

Wheel cover F L, Scratch(es), Acceptable 0,00

*No pictures to display*

Wheel cover F R, Scratch(es), Acceptable 0,00

*No pictures to display*

Wiper R, Dirty, Acceptable 0,00

wing R L, Dent(s), Acceptable	0,00
-------------------------------	------

No pictures to display

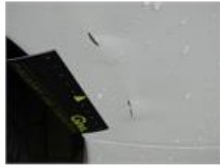
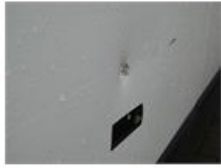
Bumper R, Scratch(es), Acceptable	0,00
-----------------------------------	------

No pictures to display

Bumper F, Scratch(es), Acceptable	0,00
-----------------------------------	------

No pictures to display

Wing R R, Dent(s) and scratch(es), LI - Repair and paint (complete)	231,15
---	--------



Bodywork, Not original part, Acceptable	0,00
---	------

No pictures to display