



MERCEDES B: 1JUY144

Vinnumber:	WDD2462121J312313	Versionname:	B 180CDI BE Edition 109PK
First Registrationdate:	3/03/2015	Fiscalpower:	
Expertise Mileage:	103022	Power Kw:	80
Bodytype:		Body color:	Blue
Gearbox:	MAN 6 VIT	Paint type:	Metalic
Transmission:	Front	Rims summer:	Steel
Fueltype:	Diesel	Oil level:	OK
Maintenance:	OK	Parking lot:	2507
Battery functioning:	Yes		
Number of doors:	5		
Number of seats:	5		
Number head rests:	5		
Rims summer:	Steel		
Category:	Passenger Car		
Oil level:	OK		
Registration Certificate Car (BE):	Yes		

Options

Radio CD		Central consol F
GPS storage	SD	Luggage cover
GPS storage		
Windows electric F		
Windows electric R		
Cruise Control		
Steering wheel multifunctional		
Seats F heated		
Type of headlighting	Headlighting Halogen	
Type of GPS	GPS big screen color	
Type of Lining	Lining artificial leather	
Type of climate control	Manual climate control	

Limited Technical Inspection

Airco functioning	OK	Battery functioning	Yes
Tires wear profile	OK	Power steering	Yes
Idle position	OK	Sound engine	OK
Engine startingtime	OK	Clutch test	OK
Exhaust gass	OK	Wiper fluid level	OK
Handbrake	OK	Transmission	OK
		Lighting	OK
		Wiperblades	OK

Degree of wear

	195/65/15/92 MS Steel			
Winter tyres:	Fr.L.	Dunlop: 4 mm	Fr.R.	Dunlop: 4 mm
	Re.L.	Dunlop: 5 mm	Re.R.	Dunlop: 5 mm

Assistance equipment

Repair kit	Yes	Compressor	Yes
------------	------------	------------	------------

Total cost ex VAT	975,75
Wing R R, Scratch(es), LI - Repair and paint (complete)	308,20



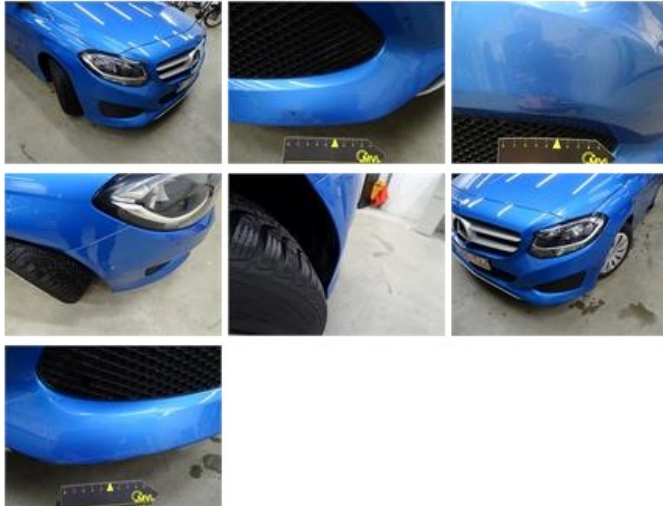
Door R R, Scratch(es), LI - Repair and paint (complete)

318,35



Bumper F, Scratch(es), LI - Repair and paint (complete)

211,80



Wheel cover F L, Scratch(es), E - Replace

30,00



Roof, Dent(s), PDR - Paintless dent repair

63,00



Bumper moulding F M, Crack, E - Replace

14,40



Wheel cover F R, Scratch(es), Acceptable

0,00

No pictures to display

Wheel cover R R, Scratch(es), E - Replace

30,00



Wheel cover R L, Scratch(es), Acceptable

0,00

No pictures to display