



MERCEDES CLA: 1NEL140

Vinnumber:	WDD1173081N343926	Versionname:	2.1 CLA 200 D URBAN
First Registrationdate:	4/02/2016	Fiscalpower:	
Expertise Mileage:	72586	Power Kw:	100
Bodytype:		Body color:	Grey
Gearbox:	MAN 6 VIT	Paint type:	Metalic
Transmission:	Back	Rims summer:	Aluminium
Fueltype:	Diesel	Oil level:	OK
Maintenance:	OK	Parking lot:	3814
Battery functioning:	Yes		
Number of doors:	4		
Number of seats:	5		
Number head rests:	5		
Rims summer:	Aluminium		
Category:	Passenger Car		
Oil level:	OK		
Registration Certificate Car (BE):	Yes		

Options

Radio CD		Sun Roof electric
GPS storage		Central consol F
GPS storage	SD	
Windows electric F		
Windows electric R		
Cruise Control		
Steering wheel multifunctional		
Seats F heated		
Type of headlighting	Headlighting Xenon	
Type of GPS	GPS big screen color	
Type of Lining	Lining artificial leather	
Type of climate control	Autom climate control	

Limited Technical Inspection

Airco functioning	OK	Battery functioning	Yes
Tires wear profile	OK	Power steering	Yes
Idle position	OK	Sound engine	OK
Engine startingtime	OK	Clutch test	OK
Exhaust gass	OK	Wiper fluid level	OK
Handbrake	OK	Transmission	OK
		Lighting	OK
		Wiperblades	OK

Degree of wear

225/40/18/92 H LightMetal				
Summer tyres:	Fr.L.	Uniroyal: 4 mm	Fr.R.	Uniroyal: 4 mm
	Re.L.	Uniroyal: 5 mm	Re.R.	Uniroyal: 5 mm

Assistance equipment

Repair kit	Yes	Compressor	Yes
------------	------------	------------	------------

Total cost ex VAT	997,44
Door F R, Scratch(es), LI - Repair and paint (complete)	0,00



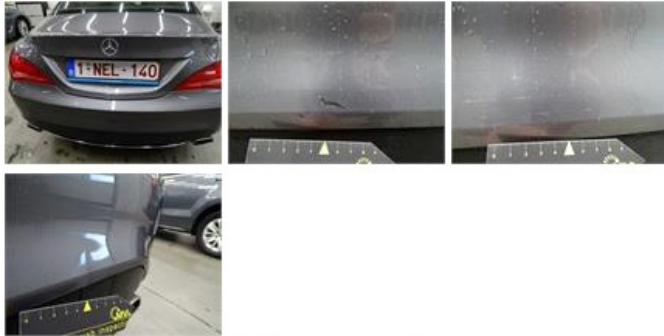
Bonnet, Chemical polution, LI - Repair and paint (complete)

290,08



Bumper R, Scratch(es), LI - Repair and paint (complete)

211,80



Wing F R, Scratch(es), LI - Repair and paint (complete)

0,00



Alloy rim F R, Scratch(es), LI - Repair and paint (complete)

95,00



Bumper trim R, Scratch(es), Acceptable

0,00

No pictures to display

Alloy rim R R, Scratch(es), LI - Repair and paint (complete)

95,00



Alloy rim R L, Scratch(es), LI - Repair and paint (complete)

95,00



Wing R L, Repaired, Acceptable

0,00

No pictures to display

Bumper F, Scratch(es), It - Spot repair

115,56



Alloy rim F L, Scratch(es), LI - Repair and paint (complete)

95,00

