



LU Mercedes gla: MQ9472

Vinnumber:	WDC1569051J244309	Versionname:	2.1 GLA 220 D 4MATIC DCT URBAN
First Registrationdate:	12/02/2016	Fiscalpower:	
Expertise Mileage:	91182	Power Kw:	130
Bodytype:		Body color:	Black
Gearbox:	Automatic	Paint type:	Metalic
Transmission:	Front	Rims summer:	Aluminium
Fueltype:	Diesel	Oil level:	OK
Maintenance:	OK	Parking lot:	1405
Battery functioning:	Yes		
Number of doors:	5		
Number of seats:	5		
Number head rests:	5		
Rims summer:	Aluminium		
Category:	Passenger Car		
Oil level:	OK		
Registration Certificate Car (BE):	Yes		

Options

Radio CD		Central consol F
GPS storage	SD	Luggage cover
GPS storage		Front parking sensors
Windows electric F		Rear parking sensors
Windows electric R		
Cruise Control		
Steering wheel multifunctional		
Type of headlighting	Headlighting Xenon	
Type of GPS	GPS big screen color	
Type of Lining	Lining semi-artificial leather	
Type of climate control	Manual climate control	

Limited Technical Inspection

Airco functioning	OK	Battery functioning	Yes
Tires wear profile	OK	Power steering	Yes
Idle position	OK	Sound engine	OK
Engine startingtime	OK	Clutch test	OK
Exhaust gass	OK	Wiper fluid level	OK
Handbrake	OK	Transmission	OK
		Lighting	OK
		Wiperblades	OK

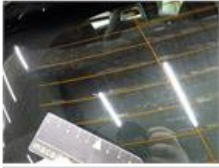
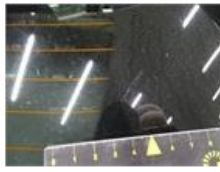
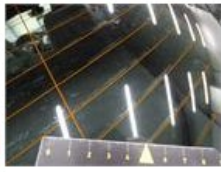
Degree of wear

	235/50/18/92 MS LightMetal			
Winter tyres:	Fr.L.	Michelin: 5 mm	Fr.R.	Michelin: 5 mm
	Re.L.	Michelin: 6 mm	Re.R.	Michelin: 6 mm

Assistance equipment

Repair kit	Yes	Compressor	Yes
------------	------------	------------	------------

Total cost ex VAT	857,20
Rear window, Scratch(es), E - Replace	370,00



Windscreen, Scratch(es), E - Replace

487,20

